

THIS DRAWING IS UNPUBLISHED. RELEASED FOR PUBLICATION

© COPYRIGHT BY TYCO ELECTRONICS CORPORATION. ALL RIGHTS RESERVED.

LOC	DIST	REVISIONS					
FT	0	P	LTR	DESCRIPTION	DATE	DWN	APVD
			D3	REVISED PER ECO-08-023072	17SEP08	HMR	SM

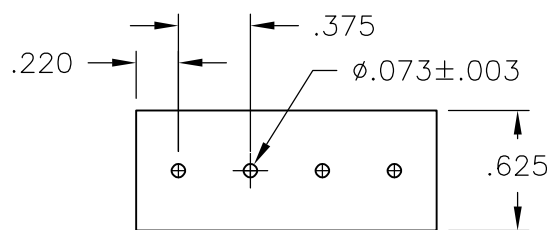
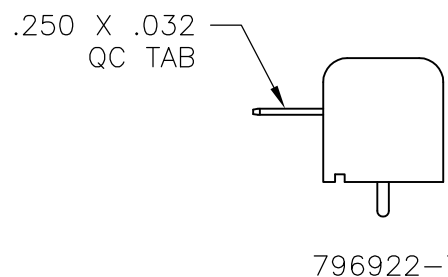
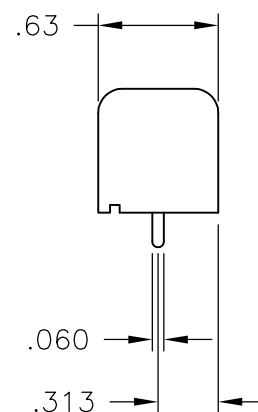
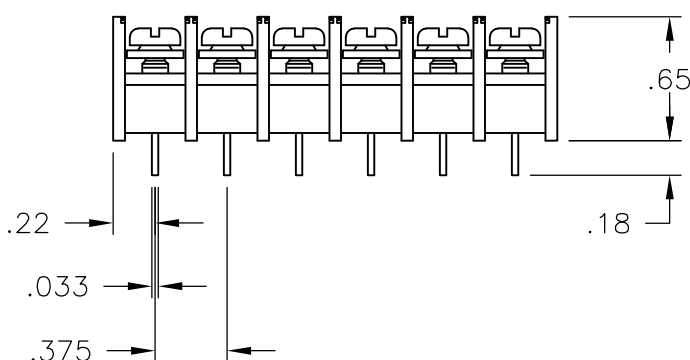
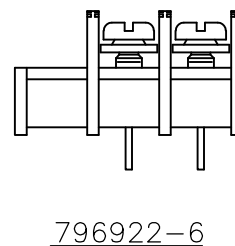
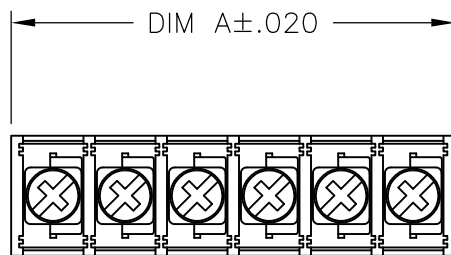
**MATERIALS:**  
 HOUSING: POLYAMIDE, UL94V-0, BLACK.  
 TERMINALS: COPPER ALLOY, TIN PLATED.  
 SCREWS: STEEL, ZINC PLATED.

**ELECTRICAL:**  
 RATING: 20A, UL & CSA.

**MECHANICAL:**  
 WIRE RANGE: 12-22 AWG.  
 MAXIMUM TIGHTENING TORQUE: 7 IN-LBS.  
 RUNNING TORQUE: 0.5-4 IN-LBS, EXCEPT WHERE NOTED.

**ENVIRONMENTAL:**  
 CONTINUOUS OPERATING TEMP.: -40°C TO +105°C.

- 1 PRELIMINARY PART NUMBER.
- 2 SCREWS ARE BOTTOMED, NO THREAD INTERRUPT.
- 3 OBSOLETE PART NUMBER.
- 4 CAPTIVE SCREWS BACKED OUT TO 1.3 IN-LB TORQUE.



RECOMMENDED PCB LAYOUT

4	1	6.811	18	NC6-P108-18	5-1437664-3
		6.436	17	NC6-P108-17	5-1437664-2
		6.061	16	NC6-P108-16	5-1437664-1
		5.686	15	NC6-P108-15	5-1437664-0
		5.311	14	NC6-P108-14	4-1437664-9
		4.936	13	NC6-P108-13	4-1437664-8
		4.561	12	NC6-P108-12	4-1437664-7
		4.186	11	NC6-P108-11	4-1437664-6
4	1	3.811	10	NC6-P108-10-068	1-796922-5
		3.811	10	NC6-P108-10	4-1437664-4
4	1	3.436	9	NC6-P108-09-067	1-796922-4
		3.436	9	NC6-P108-09	4-1437664-2
4	1	3.061	8	NC6-P108-08-066	1-796922-3
		3.061	8	NC6-P108-08	4-1437664-1
4	1	2.686	7	NC6-P108-07-065	1-796922-2
SEE FIGURE		2.686	7	NC6-P108-07-057	796922-7
		2.686	7	NC6-P108-07	4-1437664-0
4	1	2.311	6	NC6-P108-06-064	1-796922-1
2	1	2.311	6	NC6-P108-06-054	796922-3
3		2.311	6	NC6-P108-06-049	3-1437664-9
		2.311	6	NC6-P108-06	3-1437664-8
4	1	1.936	5	NC6-P108-05-063	1-796922-0
3		1.936	5	NC6-P108-05-052	3-1437664-7
		1.936	5	NC6-P108-05	3-1437664-5
4	1	1.561	4	NC6-P108-04-062	796922-9
		1.561	4	NC6-P108-04	3-1437664-3
1		1.186	3	NC6-P108-03-056	796922-6
		1.186	3	NC6-P108-03-501	1-796922-6
		1.186	3	NC6-P108-03	3-1437664-1
4	1	.811	2	NC6-P108-02-061	796922-8
		.811	2	NC6-P108-02	3-1437664-0
		DIM A	NO OF POS	CATALOG NUMBER	PART NUMBER

THIS DRAWING IS A CONTROLLED DOCUMENT.		DWN	S SCHLEGEL	03JUN03	Tyco Electronics Corporation Harrisburg, Pa 17105-3608	
DIMENSIONS: INCHES		CHK	H WAKEEM	6/3/03	NAME	
TOLERANCES UNLESS OTHERWISE SPECIFIED:		APVD	H WAKEEM	6/3/03	NC6-P108-XX ASSEMBLY	
0 PLC	± -	PRODUCT SPEC		SIZE		
1 PLC	± -	APPLICATION SPEC		CAGE CODE	DRAWING NO	RESTRICTED TO
2 PLC	± .01	WEIGHT		A3	00779	3-1437664-0
3 PLC	± .005	CUSTOMER DRAWING		SCALE	SHEET	REV
4 PLC	± -			NTS	1 OF 2	D3
ANGLES	± -					
MATERIAL	FINISH					

4

3

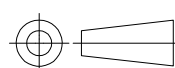
2

1

THIS DRAWING IS UNPUBLISHED. RELEASED FOR PUBLICATION  
 © COPYRIGHT BY TYCO ELECTRONICS CORPORATION. ALL RIGHTS RESERVED.

LOC	DIST	REVISIONS					
FT	0	P	LTR	DESCRIPTION	DATE	DWN	APVD
		-		SEE SHEET 1	-	-	-

9.061	24	NC6-P108-24	5-1437664-7
8.686	23	NC6-P108-23	796922-5
8.311	22	NC6-P108-22	5-1437664-6
7.936	21	NC6-P108-21	796922-4
7.561	20	NC6-P108-20	5-1437664-5
7.186	19	NC6-P108-19	5-1437664-4
DIM A	NO OF POS	CATALOG NUMBER	PART NUMBER

THIS DRAWING IS A CONTROLLED DOCUMENT.		DWN S SCHLEGEL 03JUN03	Tyco Electronics Corporation Harrisburg, Pa 17105-3608	
DIMENSIONS: INCHES		CHK H WAKEEM 6/3/03	NAME NC6-P108-XX ASSEMBLY	
		APVD H WAKEEM 6/3/03	RESTRICTED TO	
TOLERANCES UNLESS OTHERWISE SPECIFIED:		PRODUCT SPEC	SIZE A3	
0 PLC ± -	1 PLC ± -	APPLICATION SPEC	CAGE CODE 00779	DRAWING NO G-3-1437664-0
2 PLC ± .01	3 PLC ± .005	WEIGHT	SCALE NTS	
4 PLC ± -	ANGLES ± -	CUSTOMER DRAWING	SHEET 2	OF 2
MATERIAL	FINISH	REV D3		